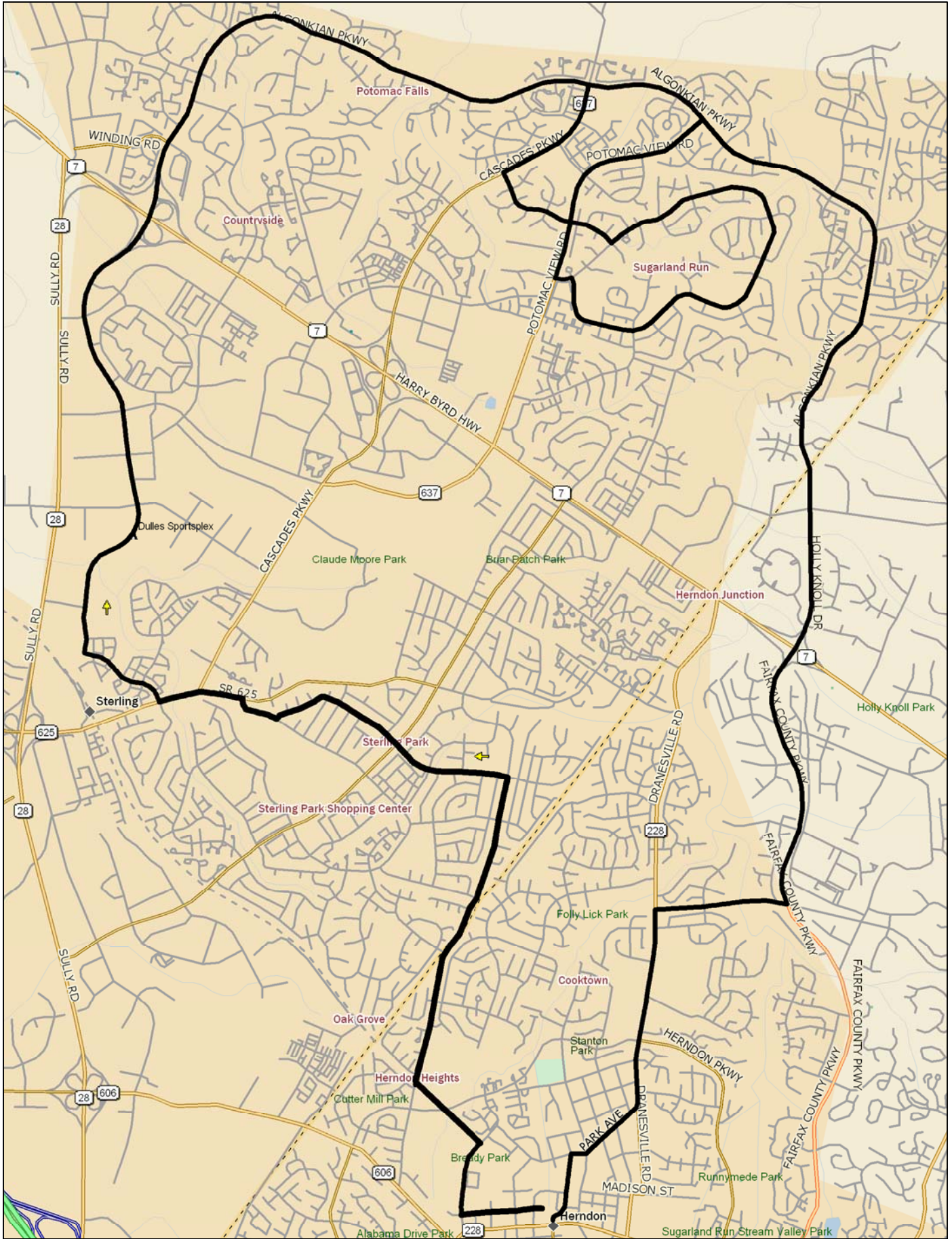


0.0 S Exit Parking Lot
X Center St.
TBO Vine St.
0.4 R Ferndale
0.7 L W&OD Trail
1.2 R Crestview
2.8 L E. Beech
3.4 X Sterling Blvd.
3.7 R Aspen Ave.
3.8 L Church
4.8 R Magnolia Rd.
5.3 R Atlantic Blvd.
6.7 X Nokes
7.3 X Dulles Center
7.8 S To Cross under Rt. 7
TBO Algonkian Pkwy.

11.3 R Potomac View Rd.
12.5 L Sugarland Run
12.6 R TRO Sugarland Run
15.1 R Willow Pl
15.3 X Potomac View
TBO Hampshire Station Dr
15.7 R Cascades Pkwy
16.4 R Algonkian Pkwy
20.3 X Rt. 7 (Bridge)
21.6 R Wiehle
22.3 L Dranesville Rd. (228)
23.2 R Park Avenue
23.5 L Monroe
23.8 R Pine
23.9 L Station
24.0 R Parking Lot
END

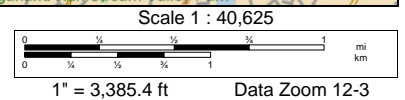
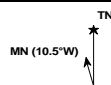
R = Right
L = Left
S = Straight
X = Cross
TBO = To Be On
TRO = To Remain On
SS = Stop Sign
SL = Stop Light
BR = Bear Right
BL = Bear Left



Data use subject to license.

© DeLorme. DeLorme Street Atlas USA® 2010.

www.delorme.com



1" = 3,385.4 ft Data Zoom 12-3